





### Standard and custom checks

Check-Mate provides many out-of-the-box checks. These checks can have built-in parameters that allow them to be tailored to the organization's specific industry and product requirements. In addition, Check-Mate Author gives your organization the flexibility to convert your knowledge of industry-specific, corporate or customer standards into checks that are incorporated within the validation process. With these checks, quality requirements are clearly defined and documented, resulting in unambiguous communication and fewer interpretation errors throughout product development.

### Quality monitoring and reporting dashboard

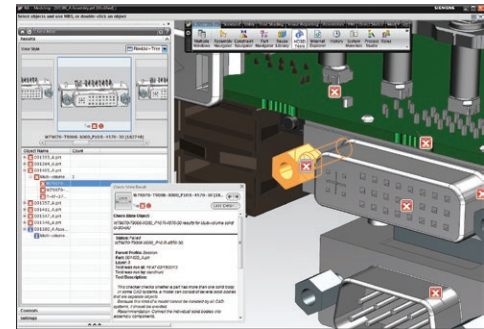
Collecting data is not time well spent unless you are able to view and examine the information so that it can be used to improve methodologies. The results from Check-Mate can be used to identify training needs, evaluate suppliers' performance or recognize improvement opportunities. Check-Mate provides a set of reporting tools that allow you to turn the data collected into dashboard information, useable for assessing the progress of your quality initiatives. Dashboard reports can be tailored to enable you to view quality metrics data in various formats, including tables, charts or graphs. Tailored reports can then be exported to web-ready HTML for distribution throughout the organization.

### Batch checking

Check-Mate can be run interactively in a NX user session or in batch mode from a command line or a script. This means that hundreds of parts can be validated without any human interaction. The results can be examined using the reporting tools provided with the product. Batch checking can also be used to preprocess the quality of any parts that have been received from suppliers without the designer having to load them into an interactive session. (Only pre-checked parts are used, assuring that standards and quality measures have been met).

### Integrating with Teamcenter

When Check-Mate is run from NX there is an option to save the generated results to Teamcenter® software, a collaborative product development management (cPDM) solution, also from Siemens PLM Software, which is the hub of the company's product lifecycle management (PLM) architecture. The results saved in Teamcenter can be chosen as the source to be displayed in NX. Check-Mate profiles (the way that a chosen set of checks is grouped together and stored) can be stored and accessed from Teamcenter. Check-Mate can also be run from within Teamcenter using the validation manager. The results can be viewed inside Teamcenter and used to initiate workflows.



#### Contact

Siemens Industry Software  
 Americas +1 314-264-8499  
 Europe +44 (0) 1276 413200  
 Asia-Pacific +852 2230 3308

[www.siemens.com/plm](http://www.siemens.com/plm)

© 2013 Siemens Product Lifecycle Management Software Inc. Siemens and the Siemens logo are registered trademarks of Siemens AG. D-Cubed, Femap, Geolus, GO PLM, I-deas, Insight, JT, NX, Parasolid, Solid Edge, Teamcenter, Tecnomatix and Velocity Series are trademarks or registered trademarks of Siemens Product Lifecycle Management Software Inc. or its subsidiaries in the United States and in other countries. All other logos, trademarks, registered trademarks or service marks used herein are the property of their respective holders.

Y1 2504 5/13 C